

2018 IFMAR 1/10 IC TRACK WORLD CHAMPIONSHIP



October 17th to 28th 2018
HOMESTEAD RC RACEWAY
13158-14548 SW 336th street
Homestead, FL 33035 - U.S.A.

BASIC INFORMATION

Homestead RC Raceway is located on the grounds of the world famous [Homestead-Miami Speedway](#). The facility is inside the gates of the Speedway and offers all the speed and excitement of the bigger race cars.



The racing circuit is ideal for 1/10 scale, 1/8 scale and 1/8 scale GT fuel on road cars. The track has 13 left and right hand turns with a racing line length of 1,000 feet (over 300 meters).

EVENT INFORMATION

Name: IFMAR 1/10 IC TRACK WORLD CHAMPIONSHIP
 Date: October 2018
 National body: ROAR
 Host: RC-1 Racing, LLC.
 Track: Homestead RC Raceway, Miami Florida – U.S.A.
 Website: www.homesteadrcraceway.com

HOST CLUB

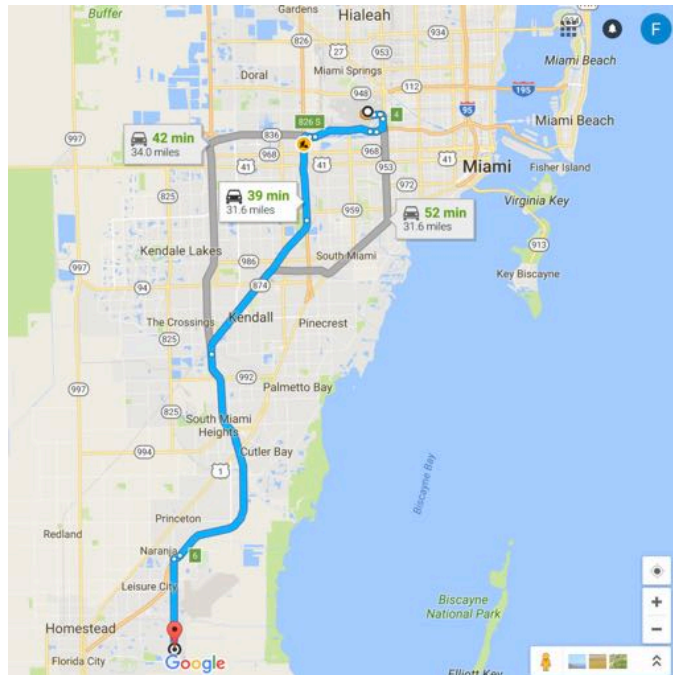
RC-1 Racing
 Website: www.rc-1racing.com
 Chairperson: Franco Desiderio
 Cell: +1 305 7990854
 Address: 7875 W. 2nd Court, Bay #7
 Hialeah, FL 33016 U.S.A.

OFFICIAL WEBSITE

Website: www.homesteadrcraceway.com
 E-Mail: homesteadrcraceway@hotmail.com

LOCATION

The Homestead RC Raceway is an outdoor track located in Homestead, Florida. Homestead is about 30 miles / 48 Kilometers south from the Miami International Airport. *This airport is serviced by many airline carriers from all over the world. All major rental car companies are available from this airport.*



Miami International Airport serves as the primary international airport of the Miami Area. One of the busiest international airports in the world, Miami International Airport caters to over 35 million passengers a year. Identifiable locally, as well as several worldwide authorities, as MIA. Miami International is the United States' third largest international port of entry for foreign air passengers and is the seventh largest such gateway in the world. The airport's extensive international route network includes non-stop flights to over seventy international cities in North and South America, Europe, Asia, and the Middle East.

Miami is a seaport city on the Atlantic Ocean in south Florida. As the seat of Miami-Dade County, the municipality is the principal, central, and most populous of its metropolitan area and part of the second-most populous metropolis in the southeastern United States. According to the U.S. Census Bureau, Miami's metro area is the eighth-most populous and fourth-largest urban area in the U.S., with a population of around 5.5 million.

For more than two decades, the Port of Miami, known as the "Cruise Capital of the World", has been the number one cruise passenger port in the world. It accommodates some of the world's largest cruise ships and operations, and is the busiest port in both passenger traffic and cruise lines.

Like Cuba's ultra-capitalist offshoot, Miami is a sprawling, modern metropolis with a Latino pulse. One of America's most fashion-forward cities, its couture shopping, A-list clubs, renowned art galleries, and innovative cuisine draw some pretty famous faces, with paparazzi (or Secret Service) frequently in tow. But beyond the glitz, Miami is a safe, impressively clean city – the cleanest in America, according to Forbes -- with a touch of small-town charm in neighborhoods like South Beach, Coconut Grove, and Coral Gables. Young families, jet-setters, retirees, and college kids buying six-packs with spare change unite, brave the humidity, and celebrate the Sunshine State in style.

South Beach -- with its perpetual techno gliding from every cafe, shoe shop, Ferrari, and pizza parlor -- is lined with historic, neon-lit Art Deco hotels that range from posh, be-seen haunts like the Delano to far cheaper, small-scale digs like the Albion. From Mid-Beach northward, larger, family-focused spa retreats like the Fontainebleau or Acqualina line the beach. Moving inland, there are business-focused Downtown towers like the Four Seasons and historic golf resorts like the Biltmore in Coral Gables or the Marriott Doral Golf Resort in Suburban Miami.

DIRECTIONS FROM MIAMI AIRPORT

39 min (31.6 miles)



via Ronald Reagan Turnpike

37 min without traffic

This route has tolls.

Miami International Airport, Miami, FL

- > Get on FL-836 W in Miami from Miad Cir and NW 12th Dr

8 min (2.3 mi)

- > Take Exit 826 S, FL-874 S and Ronald Reagan Turnpike to SW 137th Ave in Princeton. Take exit 6 from Ronald Reagan Turnpike

24 min (25.2 mi)

- > Follow SW 137th Ave to SW 336th St in Homestead

8 min (4.0 mi)

Homestead-Miami Speedway, Homestead, FL

Directions from Airport and or Florida Turnpike: Leave Miami International Airport, get on the Florida Turnpike headed South (821) to Homestead. Once you are on the Turnpike continue South about 25 to 30 minutes and you will be approaching the Homestead area.

Get off the Turnpike at Exit 6, which is the SW 137 Ave./Speedway Boulevard exit. SW 137 Ave. and Speedway Boulevard are the same road. Go South on this road for 4 miles/6.5 kilometers. You will see Homestead Miami Speedway as you approach. The complex is huge you cannot miss the buildings and grandstands.

When you are real close to the Speedway buildings you will see SW 336 Street, make a left turn, drive past the main entrance, you will see Homestead RC Raceway on your right and follow signs for unloading and parking.

TRACK & LAYOUT

The circuit is comprised of 13 left and right hand turns that is raced in a clockwise direction. The circuit width is 15 to 18 feet / 4.6 to 5.5 meters wide. The straightaway length with dogleg is 275 feet / 84 meters. The racing line circuit length is 960 feet / 292 meters. Outer track barriers are wooden 1 x 12 inches, inner lane barriers are 4 x 4 inches. The fastest 1/8 scales will average a 16 second lap time. The track surface is smooth asphalt that is in good condition. All barriers are anchored and should only require minimal maintenance if at all.



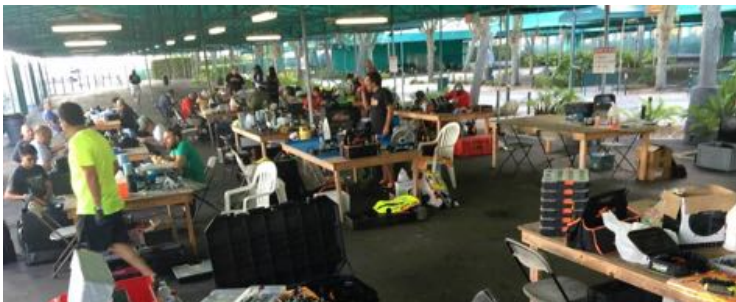
DRIVERS STAND

Drivers stand that is covered and elevated 8' / 2.4 meters. We have raced with as many as 15 drivers in a race before but 10 to 12 is much more comfortable. We have a ramp for people with disabilities.



PITS AREA

We have covered pit space with ceiling fans and overhead lights that can accommodate more than 150 drivers. 110 volt electricity is available.



TECHNICAL INSPECTION & CONTROL FUEL / TYRES AREA

Our newly built technical inspections together with the fuel and tyres control area is inside the driverstand 40 foot container which makes it very efficient for the drivers and mechanics flow in and out of the control area around the main driverstand container. The area is air conditioned, with new LED lighting, and plenty of electricity outlets. We have 4 tables that are 8' long with several chairs for the tech personnel more tables can be provided if necessary. We can provide 2 beam scales, graduated cylinders for measuring fuel capacity, 1/10 tech box and all other tools required for inspection.

SPECTATORS

We have a designated spectator walkabout area that can accommodate a few hundred spectators with a concession stand nearby.



FOOD/SNACKS

We will have an onsite concession stand with food, drinks, and snacks available at very moderate pricing. There are an abundance of restaurants and lots of fast food Restaurants within a 5 mile radius from the race track.



BATHROOM FACILITIES

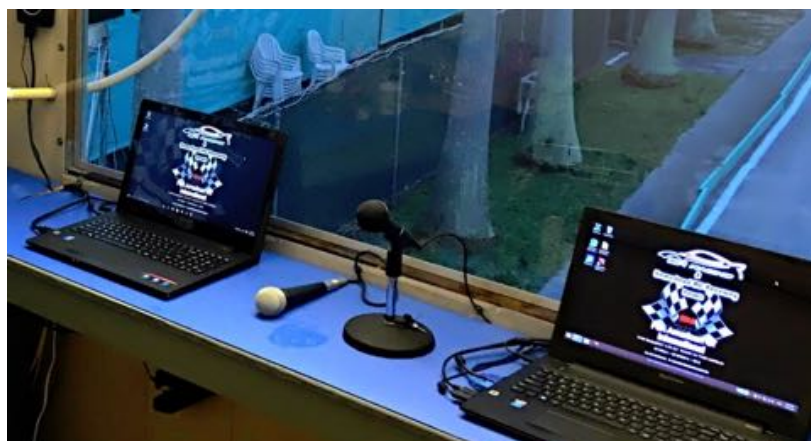
We have large permanent men and women bathrooms with running water, sinks and paper towels available.

PARKING & TRANSPORTATION

We have several acres of parking area. We can accommodate handicap parking. Overnight parking for RV's and Motor homes is allowed, no hookups and must be self contained. Dumping station is within 2 miles. Shuttles are not available to or from the motels/hotels.

TIMING and SCORING

Our Timing and scoring booth is equipped with everything needed including air conditioning. We have LiveTime RC software. We have Mylaps transponder decoder box. We have a redundant second loop.



EXPERIENCE & STAFF

Homestead RC Raceway has hosted several stand alone events over the years such as the prestigious Pan Am 1/8 GT Grand Prix which attracts drivers from South America, The Caribbean, and the United States. A few ROAR Regional Championships. We also have held many FORGASS Series Races which strictly adheres and enforces ROAR Rules. Finally, we have hosted the 2011 IFMAR 1/8 On Road IC World Championship.

Officials & Track personnel to help control the event:

Bob Ingersoll: Race Director

Franco Desiderio : Assistant Race Director

Julian Hope: TBD – Timing and Scoring, Announcing

Tim Caporal: TBD - Timing and Scoring, Announcing

Steve McLaughling: Tech Inspections

Sandy Parker: Tech Inspections Assistant

Massimo Fabiani: Control Fuel & Tyres

Daniele Matera: Control area supervisor

Ivan Cabriales: Track preparation and maintenance

Luis Alejandro Nuñez: Track preparation and maintenance

Media planning and broadband internet access

We have a high speed internet connection that we use regularly for broadcasting all of our races on live RC.

We have an experienced staff that have performed at level 3, 4 and 5 events including the 2011 IFMAR 1/8 I.C. World Championships.

We can meet all the requirements and more and look forward to conducting an awesome 2018 IFMAR 1/10 IC Track World Championships.

The track has a permanent lighting setup for night operation that can be upgraded with 6000 watts rental lights towers if needed.

PROPOSED TIME SCHEDULE:



2018 1/10 IC TRACK WORLDS

PRELIMINARY TIMETABLE

(number of groups and qualifying times will depend on entries)

Friday - IPD PRACTICE DAY 1							
GROUP	CLASS	IPD1	IPD2		IPD3	IPD4	
1	1/10 IC Track	9:00 AM	11:30 AM	LUNCH BREAK (30 min)	2:15 PM	4:45 PM	
2	1/10 IC Track	9:15 AM	11:45 AM		2:30 PM	5:00 PM	
3	1/10 IC Track	9:30 AM	12:00 PM		2:45 PM	5:15 PM	
4	1/10 IC Track	9:45 AM	12:15 PM		3:00 PM	5:30 PM	
5	1/10 IC Track	10:00 AM	12:30 PM		3:15 PM	5:45 PM	
6	1/10 IC Track	10:15 AM	12:45 PM		3:30 PM	6:00 PM	
7	1/10 IC Track	10:30 AM	1:00 PM		3:45 PM	6:15 PM	
8	1/10 IC Track	10:45 AM	1:15 PM		4:00 PM	6:30 PM	
9	1/10 IC Track	11:00 AM	1:30 PM		4:15 PM	6:45 PM	
10	1/10 IC Track	11:15 AM	1:45 PM		4:30 PM	7:00 PM	
Free Practice day from 9:00 to 7:00pm Depending on entries will do Groups with 12 drivers each Seeding at the end of the day with 3 consecutive laps							



2018 1/10 IC TRACK WORLDS

PRELIMINARY TIMETABLE

(number of groups and qualifying times will depend on entries)

Saturday - IPD PRACTICE DAY 2							
GROUP	CLASS	IPD5	IPD6		IPD7	IPD8	
1	1/10 IC Track	9:00 AM	11:30 AM	LUNCH BREAK (30 min)	2:15 PM	4:45 PM	
2	1/10 IC Track	9:15 AM	11:45 AM		2:30 PM	5:00 PM	
3	1/10 IC Track	9:30 AM	12:00 PM		2:45 PM	5:15 PM	
4	1/10 IC Track	9:45 AM	12:15 PM		3:00 PM	5:30 PM	
5	1/10 IC Track	10:00 AM	12:30 PM		3:15 PM	5:45 PM	
6	1/10 IC Track	10:15 AM	12:45 PM		3:30 PM	6:00 PM	
7	1/10 IC Track	10:30 AM	1:00 PM		3:45 PM	6:15 PM	
8	1/10 IC Track	10:45 AM	1:15 PM		4:00 PM	6:30 PM	
9	1/10 IC Track	11:00 AM	1:30 PM		4:15 PM	6:45 PM	
10	1/10 IC Track	11:15 AM	1:45 PM		4:30 PM	7:00 PM	
Free Practice day from 9:00 to 7:00pm Depending on entries will do Groups with 12 drivers each Seeding at the end of the day with 3 consecutive laps							



2018 1/10 IC TRACK WORLDS

PRELIMINARY TIMETABLE

(number of groups and qualifying times will depend on entries)

Sunday - FREE PRACTICE DAY 1							
GROUP	CLASS	FP1	FP2		FP3	FP4	
1	1/10 IC Track	9:00 AM	11:30 AM	LUNCH BREAK (30 min)	2:15 PM	4:45 PM	
2	1/10 IC Track	9:15 AM	11:45 AM		2:30 PM	5:00 PM	
3	1/10 IC Track	9:30 AM	12:00 PM		2:45 PM	5:15 PM	
4	1/10 IC Track	9:45 AM	12:15 PM		3:00 PM	5:30 PM	
5	1/10 IC Track	10:00 AM	12:30 PM		3:15 PM	5:45 PM	
6	1/10 IC Track	10:15 AM	12:45 PM		3:30 PM	6:00 PM	
7	1/10 IC Track	10:30 AM	1:00 PM		3:45 PM	6:15 PM	
8	1/10 IC Track	10:45 AM	1:15 PM		4:00 PM	6:30 PM	
9	1/10 IC Track	11:00 AM	1:30 PM		4:15 PM	6:45 PM	
10	1/10 IC Track	11:15 AM	1:45 PM		4:30 PM	7:00 PM	
Groups with 12 drivers each - 10 minutes practice Seeding at the end of the day with 3 consecutive laps							



2018 1/10 IC TRACK WORLDS

PRELIMINARY TIMETABLE

(number of groups and qualifying times will depend on entries)

Monday - FREE PRACTICE DAY 2							
GROUP	CLASS	FP5	FP6		FP7		
1	1/10 IC Track	9:00 AM	11:30 AM	LUNCH BREAK (30 min)	2:15 PM	TRACK CLOSED 5:00 PM Opening Ceremony 6:30 PM Concourse d'elegance	
2	1/10 IC Track	9:15 AM	11:45 AM		2:30 PM		
3	1/10 IC Track	9:30 AM	12:00 PM		2:45 PM		
4	1/10 IC Track	9:45 AM	12:15 PM		3:00 PM		
5	1/10 IC Track	10:00 AM	12:30 PM		3:15 PM		
6	1/10 IC Track	10:15 AM	12:45 PM		3:30 PM		
7	1/10 IC Track	10:30 AM	1:00 PM		3:45 PM		
8	1/10 IC Track	10:45 AM	1:15 PM		4:00 PM		
9	1/10 IC Track	11:00 AM	1:30 PM		4:15 PM		
10	1/10 IC Track	11:15 AM	1:45 PM		4:30 PM		
Groups with 12 drivers each - 10 minutes practice Seeding at the end of the day with 3 consecutive laps							



2018 1/10 IC TRACK WORLDS

PRELIMINARY TIMETABLE

(number of groups and qualifying times will depend on entries)

Tuesday - CONTROL TIMED PRACTICE DAY 3							
GROUP	CLASS	CTP1	CTP2	LUNCH BREAK (30 min)	CTP3	CTP4	
1	1/10 IC Track	9:00 AM	11:30 AM		2:15 PM	4:45 PM	
2	1/10 IC Track	9:15 AM	11:45 AM		2:30 PM	5:00 PM	
3	1/10 IC Track	9:30 AM	12:00 PM		2:45 PM	5:15 PM	
4	1/10 IC Track	9:45 AM	12:15 PM		3:00 PM	5:30 PM	
5	1/10 IC Track	10:00 AM	12:30 PM		3:15 PM	5:45 PM	
6	1/10 IC Track	10:15 AM	12:45 PM		3:30 PM	6:00 PM	
7	1/10 IC Track	10:30 AM	1:00 PM		3:45 PM	6:15 PM	
8	1/10 IC Track	10:45 AM	1:15 PM		4:00 PM	6:30 PM	
9	1/10 IC Track	11:00 AM	1:30 PM		4:15 PM	6:45 PM	
10	1/10 IC Track	11:15 AM	1:45 PM	4:30 PM	7:00 PM		

Groups with 12 drivers each - 10 minutes practice
Seeding at the end of the day with 3 consecutive laps



2018 1/10 IC TRACK WORLDS

PRELIMINARY TIMETABLE

(number of groups and qualifying times will depend on entries)

Wednesday - QUALIFYING DAY 1					
GROUP	CLASS	Q1	LUNCH BREAK (30 min)	Q2	Q3
1	1/10 IC Track	10:00 AM		1:15 PM	4:15 PM
2	1/10 IC Track	10:15 AM		1:30 PM	4:30 PM
3	1/10 IC Track	10:30 AM		1:45 PM	4:45 PM
4	1/10 IC Track	10:45 AM		2:00 PM	5:00 PM
5	1/10 IC Track	11:00 AM		2:15 PM	5:15 PM
6	1/10 IC Track	11:15 AM		2:30 PM	5:30 PM
7	1/10 IC Track	11:30 AM		2:45 PM	5:45 PM
8	1/10 IC Track	11:45 AM		3:00 PM	6:00 PM
9	1/10 IC Track	12:00 PM		3:15 PM	6:15 PM
10	1/10 IC Track	12:15 PM		3:30 PM	6:30 PM
11	1/10 IC Track	12:30 PM		3:45 PM	6:45 PM
12	1/10 IC Track	12:45 PM	4:00 PM	7:00 PM	

Groups with 10 drivers each - 10 minutes qualifiers



2018 1/10 IC TRACK WORLDS

PRELIMINARY TIMETABLE

(number of groups and qualifying times will depend on entries)

Thursday - QUALIFYING DAY 2 / SUPER POLE						
GROUP	CLASS	Q4	LUNCH BREAK (30 min)	Q5	Q6	SUPER POLE starts at 6:00 PM
1	1/10 IC Track	9:00 AM		12:15 PM	3:15 PM	
2	1/10 IC Track	9:15 AM		12:30 PM	3:30 PM	
3	1/10 IC Track	9:30 AM		12:45 PM	3:45 PM	
4	1/10 IC Track	9:45 AM		1:00 PM	4:00 PM	
5	1/10 IC Track	10:00 AM		1:15 PM	4:15 PM	
6	1/10 IC Track	10:15 AM		1:30 PM	4:30 PM	
7	1/10 IC Track	10:30 AM		1:45 PM	4:45 PM	
8	1/10 IC Track	10:45 AM		2:00 PM	5:00 PM	
9	1/10 IC Track	11:00 AM		2:15 PM	5:15 PM	
10	1/10 IC Track	11:15 AM		2:30 PM	5:30 PM	
11	1/10 IC Track	11:30 AM		2:45 PM	5:45 PM	
12	1/10 IC Track	11:45 AM		3:00 PM	6:00 PM	
Groups with 10 drivers each - 10 minutes qualifiers						



2018 1/10 IC TRACK WORLDS

PRELIMINARY TIMETABLE

(number of groups and qualifying times will depend on entries)

Friday - LOWER FINALS				
FINAL	GROUP	start	finish	duration
1/512	B	10:00 AM	10:30 AM	20 min.
1/512	A	10:30 AM	11:00 AM	20 min.
1/256	B	11:00 AM	11:30 AM	20 min.
1/256	A	11:30 AM	12:00 PM	20 min.
1/128	B	12:00 PM	12:30 PM	20 min.
1/128	A	12:30 PM	1:00 PM	20 min.
LUNCH BREAK				
1/64	B	2:00 PM	2:30 PM	20 min.
1/64	A	2:30 PM	3:00 PM	20 min.
1/32	B	3:00 PM	3:30 PM	20 min.
1/32	A	3:30 PM	4:00 PM	20 min.
1/16	B	4:00 PM	4:30 PM	20 min.
1/16	A	4:30 PM	5:00 PM	20 min.
Groups with 10 drivers each First 3 advance into the next Final				



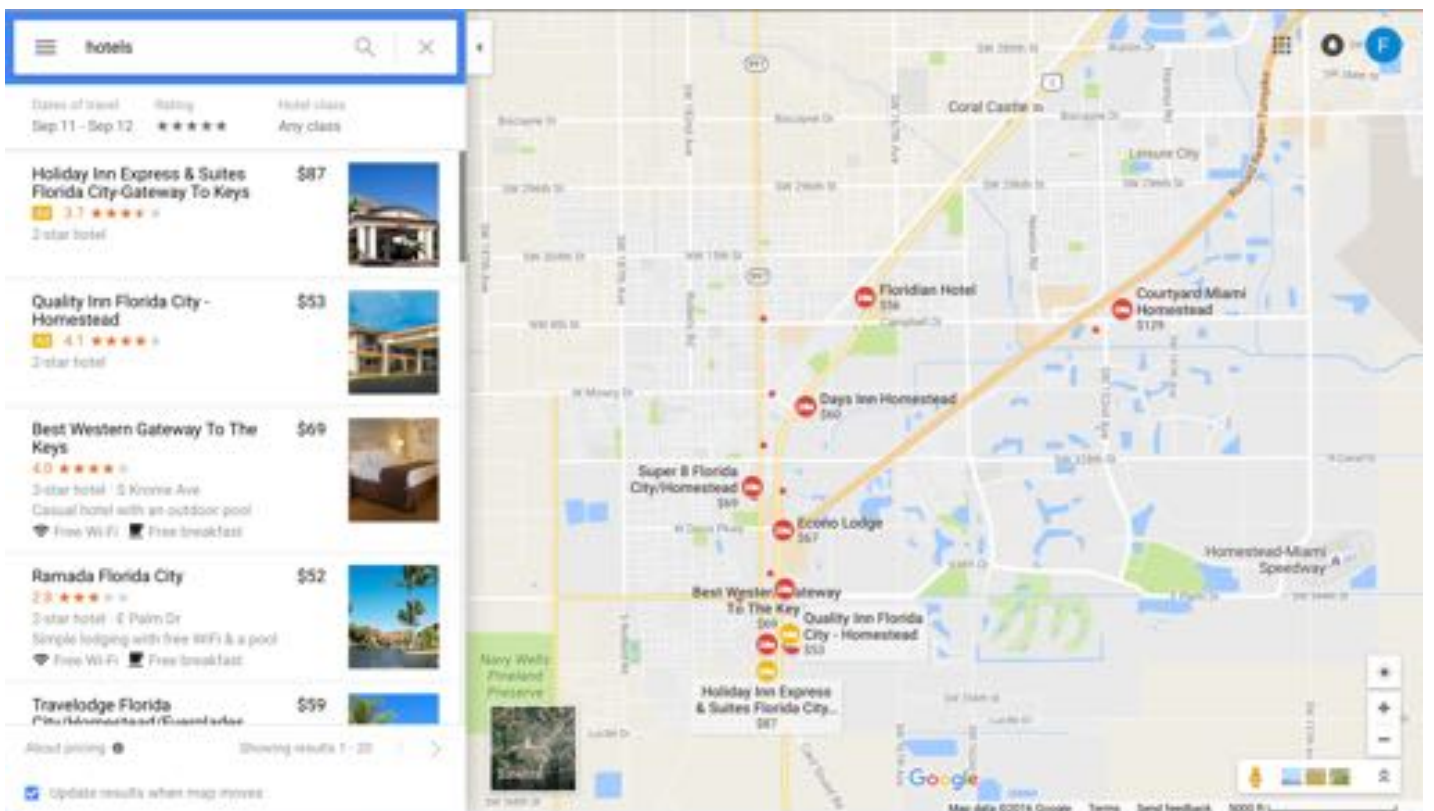
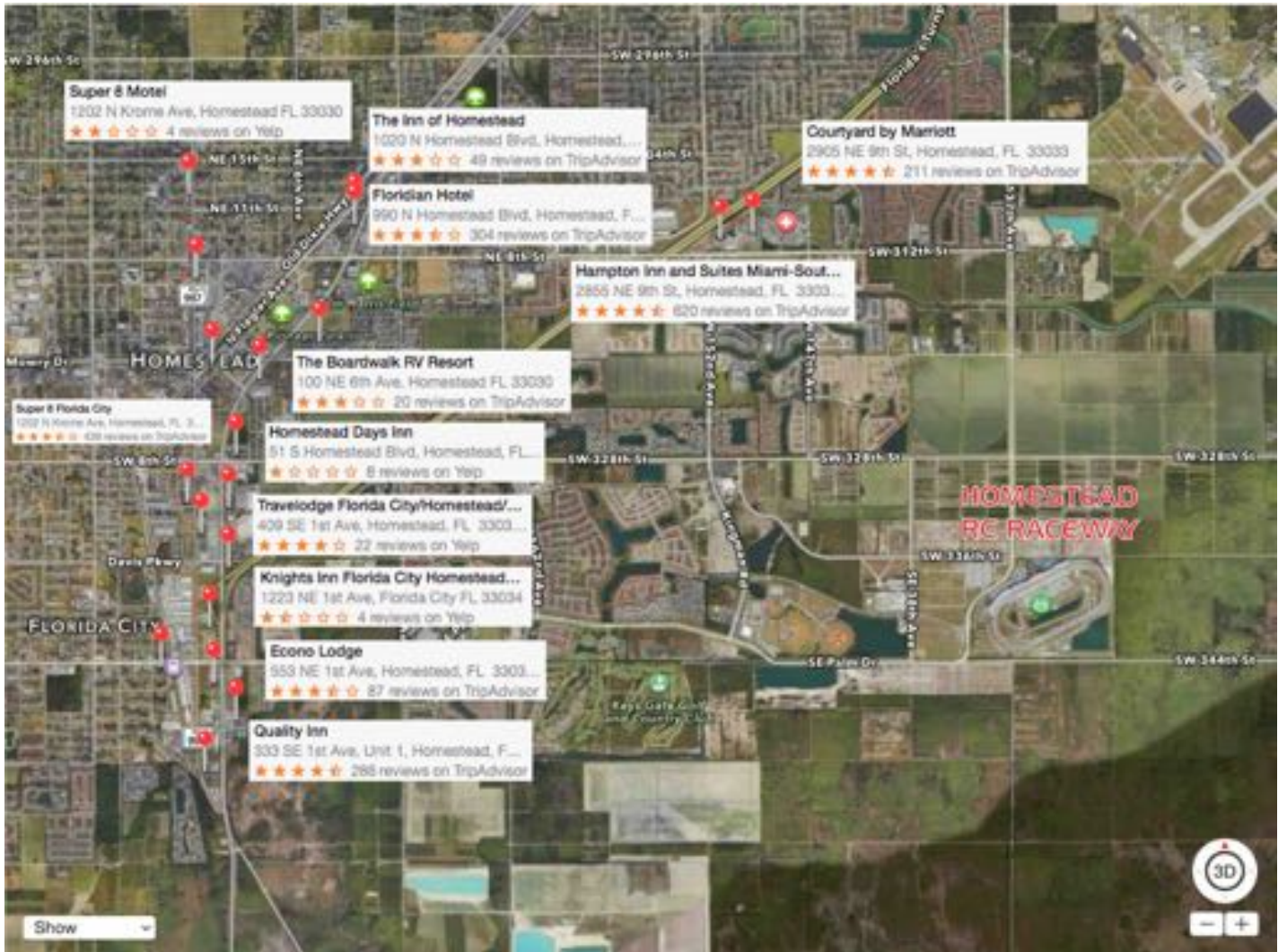
2018 1/10 IC TRACK WORLDS

PRELIMINARY TIMETABLE

(number of groups and qualifying times will depend on entries)

Saturday - FINAL DAY				
FINAL	GROUP	start	finish	duration
1/8	B	10:00 AM	10:30 AM	20 min.
1/8	A	10:30 AM	11:00 AM	20 min.
1/4	B	11:00 AM	11:30 AM	20 min.
1/4	A	11:30 AM	12:00 PM	20 min.
PRACTICE TQ & SP		12:00 PM	12:30 PM	20 min.
Press conference Top Qualifier - Super Pole winner		12:30 PM	1:00 PM	20 min.
LUNCH BREAK				
SEMI FINAL	B	3:00 PM	3:40 PM	30 min.
SEMI FINAL	A	3:40 PM	4:10 PM	30 min.
Drivers Presentation		4:10 PM	4:40 PM	20 min.
Warmup Practice		4:40 PM	4:55 PM	15 min.
Trial Start		4:55 PM	5:00 PM	2 min.
FINAL RACE		5:00 PM	6:00 PM	60 min.
Groups with 10 drivers each First 3 advance into the next Final				

MOTELS, HOTELS & AIRPORTS



CAMPING / MOTORHOMES / TRAVEL TRAILERS

Overnight parking for RV's and Motor homes is allowed, no hookups and must be self contained. Dumping station is within 2 miles.

