



STAGE 1 REPORT

WORLD CHAMPIONSHIP 2022

RC Redován / Information

STAGE 1 REPORT



RC REDOVAN TRACK

CAMINO DEL CEMENTERIO, 227
03370 - REDOVÁN (ALICANTE)
SPAIN

COORDINATES: 38.134182, -0.929208

RC REDOVAN CORRESPONDENCE TO

MEDICO TEMISTOCLES ALMAGRO 22 LOCAL B
03300 - ORIHUELA (SPAIN)

CONTACT

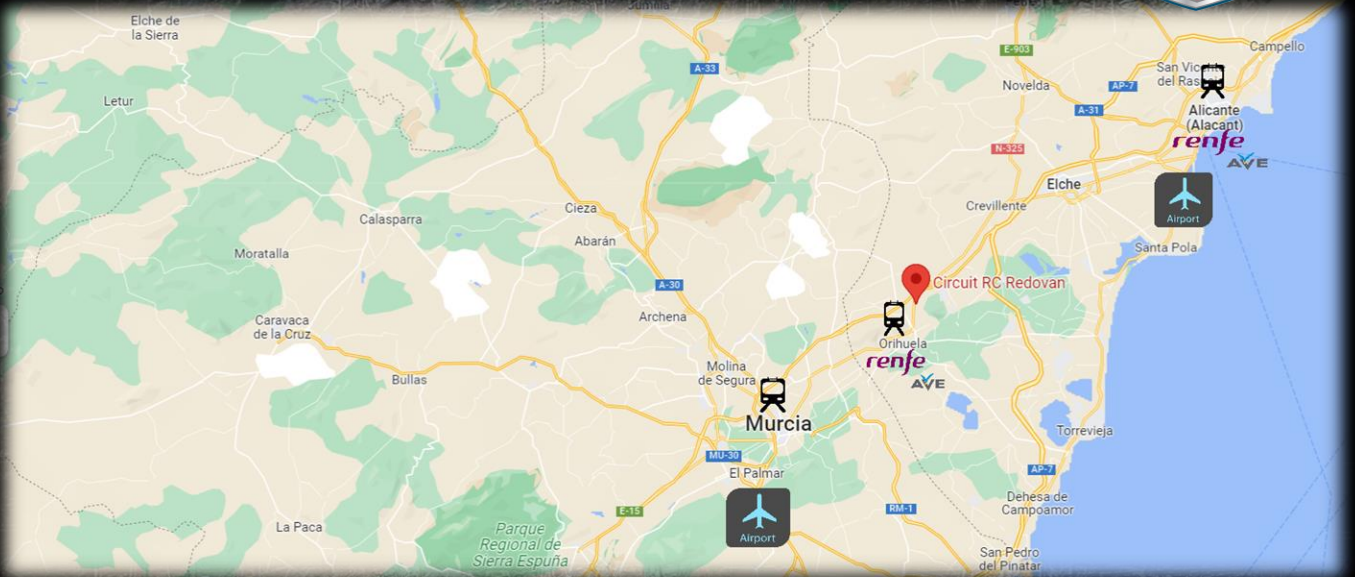
+34 663 07 44 08 (BRYAN)
INFO@RC-REDOVAN.ES
BRYANBALDO@GMAIL.COM

SOCIAL NETWORKS AND WEBSITE

WWW.RC-REDOVAN.ES
FACEBOOK: RCREDOVAN

LOCATION / WHERE IS THE TRACK

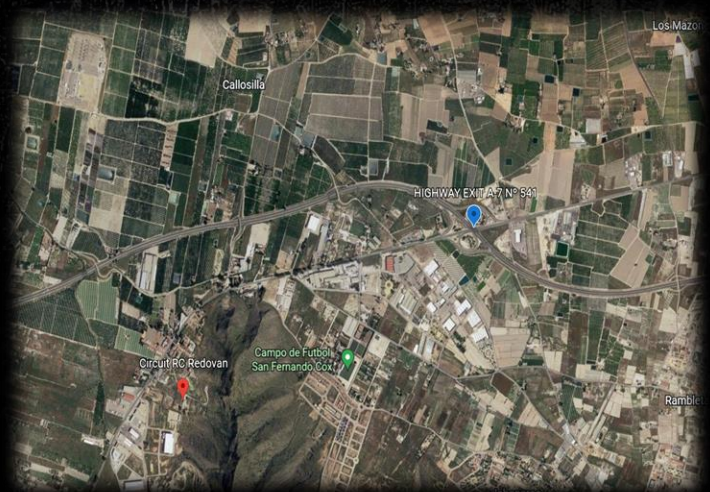
STAGE 1 REPORT



THE LOCATION OF THE TRACK MAKES IT THE ACCESS REALLY EASY AND IT'S VERY CLOSE TO NON PAYING HIGHWAY (A-7). THE NEAREST CITY FROM THE TRACK IS **MURCIA** (25 MIN). THIS CITY HAS AIRPORT, RAILWAY STATION, RESTAURANTS, COMERCIAL CENTERS AND MANY HOTELS. SAME CAN BE SAID OF **ALICANTE** (40 MIN), WICH APART, HAVE BEACHES, PORT AND HIGSPEED RAILWAY STATION (AVE). JUST 10 MINUTES FROM TRACK WE HAVE **ORIHUELA** THAT ALSO HAS HOTELS, RESTAURANTS, COMERCIAL CENTER AND CONNECTION WITH THE HIGHSPEED RAILWAY STATION.

GOOGLE MAPS LINK TO THE TRACK

<https://www.google.es/maps/place/Circuit+RC+Redovan/@38.0492492,-0.9434173,9.47z/data=!4m5!3m4!1s0xd6398235ad9f993:0xf5f85a3f6946d0ec18m2!3d38.135714d-0.92915>

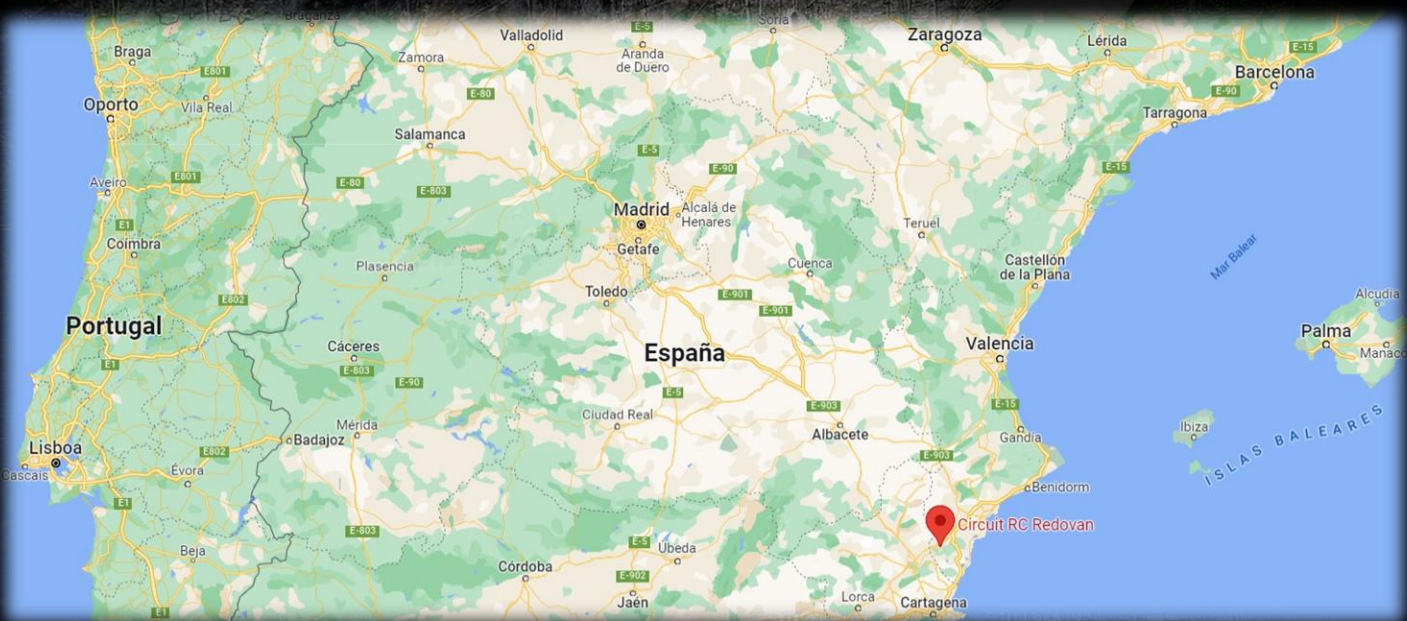


LOCATION / WHERE IS THE TRACK

STAGE 1 REPORT



THE NEAREST AIRPORT TO THE CIRCUIT IS **MURCIA**, WHICH IS ONLY 20 KM AWAY. **ALICANTE** AIRPORT IS 37 KM AWAY, **VALENCIA** AIRPORT IS 200KM AWAY AND THE TRACK IS 400 KM FROM THE AIRPORT OF **MADRID**. **ALMERIA** AIRPORT IS 240 KMS AWAY AND **BARCELONA** AIRPORT IS 540KM AWAY



ORGANIZATION STAFF/ SCHEDULE

STAGE 1 REPORT



RACE ORGANISATION STAFF

EVENT DIRECTOR: ANTONIO BALDO

EVENT DIRECTOR ASSISTANT: BRYAN BALDO

TIME KEEPER: JAVIER LLOBREGAT

ASSISTAN TIME KEEPER: SERGIO LLOBREGAT

TECHNICAL INSPECTION: JAIME PUCHE , JUAN BAUTISTA & VICENTE LOPEZ

IFMAR REFEREE: T.B.A.

EFRA REFEREE: T.B.A.

AECAR REFEREE: PABLO NEILA

RACE DIRECTOR: ALFONSO PINEDA

RACE DIRECTOR ASSISTANT: JOAN ROSELL

EFRA CHAIRMAN: CARLOS GOMEZ



ORGANIZATION STAFF / SCHEDULE

STAGE 1 REPORT



SCHEDULE

DAY -1; SATURDAY 03/09:

GATES OPEN	10:00 AM
REGISTRATION	12:00 AM - 17:00 PM
GATES CLOSE	19:30 PM

DAY 0; SUNDAY 04/09:

GATES OPEN	8:00 AM
PRACTICE	FROM 9:00 AM
GATES CLOSE	20:30 PM

DAY 1; MONDAY 05/09:

GATES OPEN	8:00 AM
PRACTICE	FROM 9:00 AM
GATES CLOSE	20:30 PM

DAY 2; TUESDAY 06/09:

GATES OPEN	8:00 AM
RESEEDING	FROM 9:00 AM
GATES CLOSE	20:30 PM

DAY 3; WEDNESDAY 07/09:

GATES OPEN	8:00 AM
QUALY DAY	FROM 9:00 AM
GATES CLOSE	20:30 PM

DAY 4; THURSDAY 08/09:

GATES OPEN	8:00 AM
QUALY DAY	FROM 9:00 AM
GATES CLOSE	20:30 PM

DAY 5 FRIDAY 09/09

GATES OPEN	8:00 AM
LOWER FINALS DAY	FROM 9:00 AM
GATES CLOSE	20:30 PM

DAY 6; SATURDAY 10/09:

GATES OPEN	8:00 AM
MAIN FINALS DAY	FROM 9:00 AM
GATES CLOSE	20:30 PM

NOTES:

AFTER OPENING CEREMONY, THE ORGANISERS INVITES TO ALL ASSISTANTS SOFT DRINKS AND SNACKS. ALSO THE RACE DINNER GALA WILL BE ON TRACK AND WE WILL SERVE THE BEST DISHES OF OUR TRADITION.



VARIOUS INFORMATION

STAGE 1 REPORT



FREQUENCIES

APPROVED FREQUENCIES :

2.4 GHZ	40.665	40.775
26.995	40.675	40.785
27.045	40.685	40.815
27.095	40.695	40.825
27.145	40.715	40.835
27.195	40.725	40.865
27.235	40.735	40.875
27.275	40.765	

FUEL ON TRACK

WE OFFER THE OPTION TO THE DRIVERS TO HAVE FUEL ON TRACK. OUR OFFICIAL PROVIDER **RUNNER TIME 25% OF NITRO** OFFER FUEL TO ALL DRIVERS. HE NEED TO ADVISE US 40 DAYS BEFORE THE EVENT. ALSO OTHER BRANDS WILL BE AVAILABLE IF THE DRIVERS TALK WITH THE COMPANY (MERLIN FUEL AND NITROLUX ARE FROM SPAIN AND GOOD OPTION TO KEEP IN MIND



EVENTS ON TRACK AND PRACTICE

OUR TRACK WILL HOST MANY EVENTS THIS YEAR. THE FIRST WILL BE THE SPANISH NATIONALS ON **MARCH 5TH AND 6TH**. LATER WE HAVE THE WORLDS WARM UP THE **FIRST WEEKEND OF JUNE**. THE TRACK WILL CLOSE TO PREPARE THE WORLD CHAMPIONSHIP **JUNE 9TH**. FROM THIS DAY NOBODY CAN PRACTICE ON TRACK. THE NEW LAYOUT WILL BE SECRET UNTILL WORLDS.

SHOCKET TYPE AND VOLTAGE

THE VOLTAGE IN SPAIN IS **220 V**, THE SAME AS IN PRACTICALLY ALL EUROPEAN COUNTRIES. THE FREQUENCY IS **50 HZ**. THE PLUGS AND SOCKETS ARE OF **TYPE F**. YOU CAN FIND THE TYPE ON IMAGE



ACCOMMODATION

STAGE 1 REPORT



OUR GUESTS CAN STAY IN ONE OF THE 100+ HOTELS WE HAVE IN THE AREA. MOST OF THEM ARE LOCATED ON THE SEASIDE AND SURROUNDED BY RESTAURANTS. ALSO CAN FIND A VERY CHEAP APARTMENTS TO RENT DURING ALL EVENT. **IN ORANGE YOU CAN FIND OUR RECOMENDATIONS**

HOTEL	WHERE?	DISTANCE FROM THE TRACK	PRICE (APROX.)
HOTEL VERSALLES ***	GRANJA DE ROCAMORA	3 MINUTES	45€
HOTEL MELIÁ PALACIO DE TUDEMIR BOUTIQUE ****	ORIHUELA	7 MINUTES	75€
HOTEL HUERTO DEL CURA ****	ELCHE	16 MINUTES	95€
JARDÍN MILENIO ****	ELCHE	19 MINUTES	65€
TRYP CIUDAD ELCHE ***	ELCHE	20 MINUTES	60€
IBIS ELCHE **	ELCHE	21 MINUTES	50€
ARCO DE SAN JUAN ****	MURCIA	25 MINUTES	50€
CATALONIA CONDE DE FLORIDABLANCA ****	MURCIA	25 MINUTES	50€
SANTOS NELVA ****	MURCIA	25 MINUTES	55€

ACCOMMODATION

STAGE 1 REPORT



HOTEL JARDIN MILENIO ****

HOTEL PALACIO DE TUDEMIR****



ACCOMMODATION

STAGE 1 REPORT



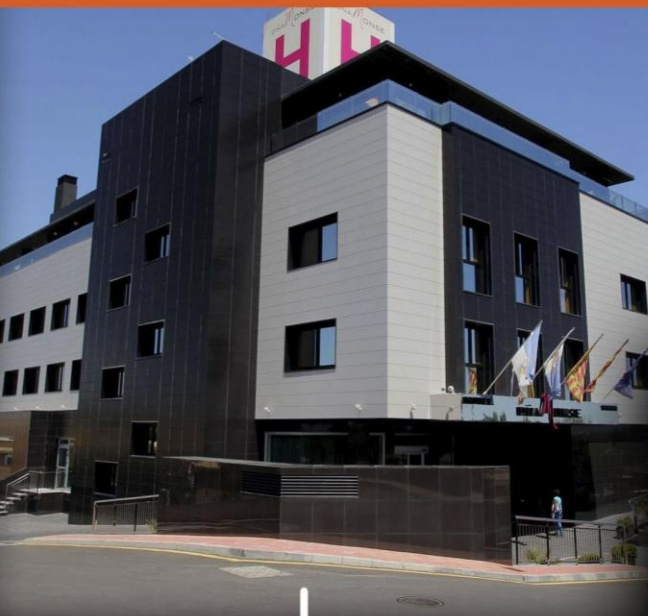
HOTEL	WHERE?	DISTANCE FROM THE TRACK	PRICE (APROX.)
HOLIDAY INN ELCHE ****	INDUSTRIAL PARK ELCHE	25 MINUTES	65€
LA FINCA GOLD & SPA RESORT *****	ALGORFA	25 MINUTES	135€
CABO CERVERA ***	TORREVIEJA	30 MINUTES	75€
HOTEL & SPA DOÑA MONTSE *****	ORIHUELA COSTA	30 MINUTES	85€
ORIHUELA COSTA RESORT ***	ORIHUELA COSTA	35 MINUTES	85€
SERVIGROUP LA ZENIA *****	ORIHUELA COSTA	35 MINUTES	90€
TORREJOVEN ***	ORIHUELA COSTA	35 MINUTES	60€
MARINA INTERNACIONAL ***	TORREVIEJA	35 MINUTES	70€
FONTANA PLAZA ***	TORREVIEJA	40 MINUTES	80€
HOTEL LA LAGUNA SPA & GOLF *****	TORREVIEJA	40 MINUTES	85€



LA FINCA (ALGORFA)

ACCOMMODATION

STAGE 1 REPORT



HOTEL DOÑA MONTSE ****

HOTEL MARINA INTERNACIONAL ****



ABOUT THE TRACK / PICTURES OF OUR TRACK

STAGE 1 REPORT

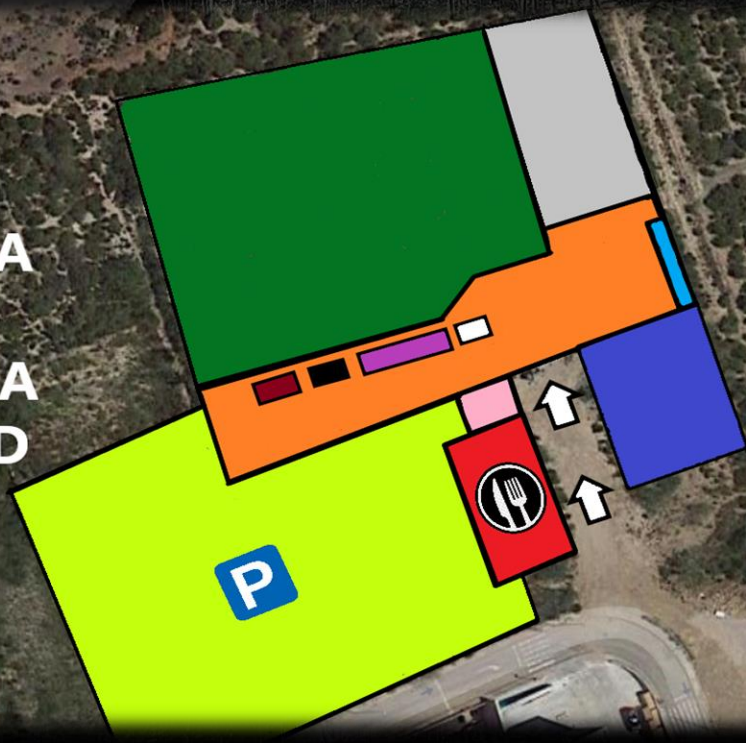


THANKS TO A GREAT TEAM AND OUR PASSION FOR RC WE ARE READY TO HOST ANY TYPE OF INTERNATIONAL EVENT IN OUR FACILITIES. PROOF OF THIS ARE THE NUMEROUS INTERNATIONAL AND NATIONAL EVENTS HOSTED IN OUR FACILITIES DURING MORE OF 30 YEARS (EFRA EUROPEAN CHAMPIONSHIPS IN 2016 AND 2020, SPANISH CHAMPIONSHIPS SINCE 1995 AND NUMEROUS REGIONAL EVENTS).

WE HAVE THE HELP OF THE ENTIRE SPANISH AND EUROPEAN ASSOCIATIONS, WHICH HAVE ORGANIZED THE BEST INTERNATIONAL EVENTS OF RECENT YEARS. THE TRACK HAS ALL THE FACILITIES NEEDED FOR ANY FIRST CLASS INTERNATIONAL EVENT AND IT HAS ROOM AND ECONOMICAL BALANCE TO CARRY OUT ANY OTHER IMPROVEMENTS THAT MIGHT BE REQUIRED TO HOST A WORLD CHAMPIONSHIP EVENT. WE ALSO HAVE A LARGE CAR PARKING THAT WILL HOLD CARAVANS AND CAMPING FACILITIES.

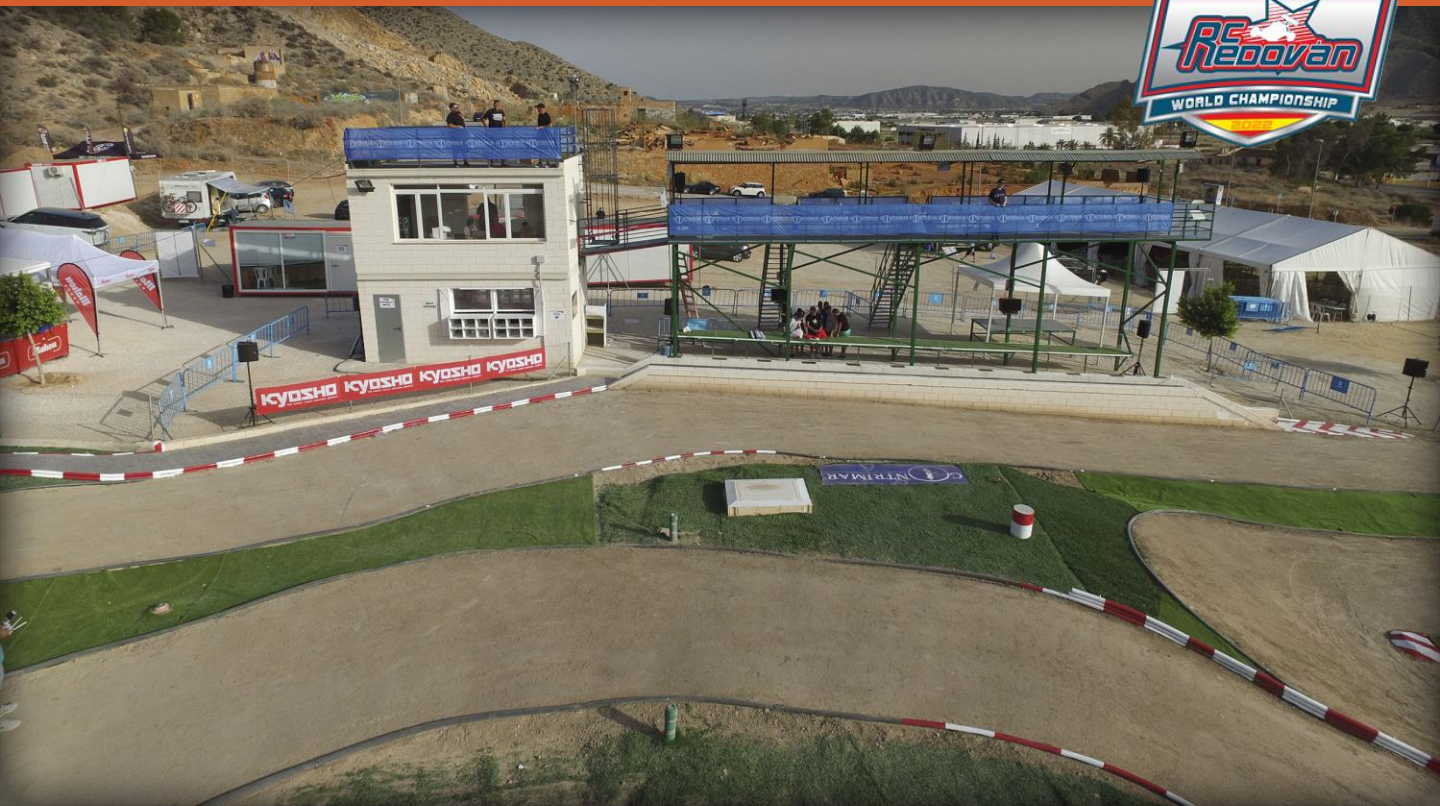
THE DESIGN OF THE TRACK HAS BEEN COMPLETED WITH FULL RESPECT OF THE SURROUNDING AREA AND IT IS A FULLY EQUIPPED PERMANENT FACILITY OPERATING THE WHOLE YEAR THANKS TO THE 100% SUPPORT OF THE CITY COUNCIL THAT HAS GIVEN ALL THE LAND AND PERMITS TO THE CLUB.

-  RESTAURANT
-  PARKING
-  TRACK
-  COMMON AREA
-  Paddock
-  CLEANING AREA
-  DRIVERS STAND
-  TECH. INSPECTION
-  RACE CONTROL
-  IFMAR OFFICE
-  SPONSORS AREA
-  W.C



ABOUT THE TRACK / PICTURES OF OUR TRACK

STAGE 1 REPORT



ABOUT THE TRACK / PICTURES OF OUR TRACK

STAGE 1 REPORT



ABOUT THE TRACK / PICTURES OF OUR TRACK

STAGE 1 REPORT



ABOUT THE TRACK / PICTURES OF OUR TRACK

STAGE 1 REPORT



CLUB RADIO CONTROL REDD

REDD

